



# Battisford & District Gardening Club Newsletter

Issue 58

## Wreath making 3rd December 2022

Caroline again organized another successful wreath making session , the results of which adorned many local front doors until Christmas



# Monday 5th December 2022

## Annual Quiz

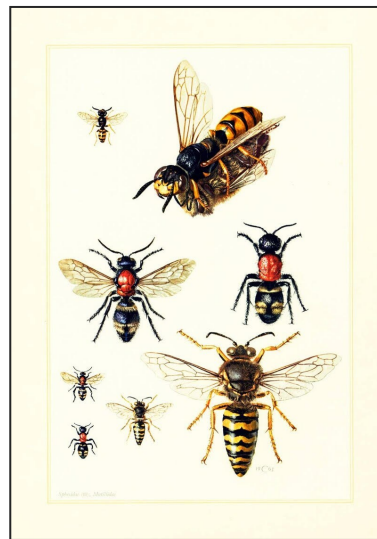
Denis, the Club Chairman presided over the Annual Quiz. Denis used George's book of questions but did his own excellent over-heads.

With half time food organized by Caroline it was a very enjoyable evening.

# Monday 6th February

## Wasps—Dr Ian Bedford

The first talk, in February this year, was by Dr Ian Bedford, who set out to persuade any reluctant wasp appreciators that they are, if not actually lovable, fascinating and essential creatures for our eco system. Please do not kill wasps, just move out of their way, is his advice. If you have a problem, try a Waspinator. This imitates a wasp nest and as wasps will avoid being in the same space as another colony's nest, this is an effective deterrent. It was an absorbing talk and Ian's love of wasps came through all the information he gave about these interesting and vital insects.



Ian gave us a 'handy'! tip to deter a wasp who is flying around you. You make the shape of a bird with your hand and this fools the wasp who flies away. Give it a try and let me know the result!. (apparently it doesn't work in the autumn when they are tipsy on rotten fruit!



Ian also told us about The Green Gardener , a company that promotes chemical free products

# Monday 6th March

## Lucy Skellorn— Cedric Morris & the garden at Benton End



On Monday 6<sup>th</sup> March, members were treated to an interesting and informative talk by Lucy Skellorn.

Lucy is our local tree warden and a research assistant at the Garden Museum. She has a family history of interest in plants especially irises. Her great Grandfather, Sir Michael Foster, was the first to bring irises to the UK.

Cedric Morris was an artist and a plantsman born in 1882 in Wales. He began his artistic career by training in Paris but on the outbreak of WW1 he returned to the UK where not fit for active service, he trained horses, though reluctantly as he knew their fate. At the end of the war he met Arthur Lett Haines, with whom he had a lifelong friendship, and the pair lived in Cornwall where there was a thriving artistic community. After the war they spent 5 years in Paris

and, on returning to London, and keen to pursue his interest in horticulture, he and Lett Haines rented Pound Farm in Higham, Suffolk. They had many artistic friends to stay including Barbara Hepworth, the famous sculptor. In 1937 they opened a successful art school in Dedham and had many notable students including Lucien Freud. Sadly the school was destroyed by fire in 1939. Looking for a alternative place for their school they found Benton End, near Hadleigh, and the large garden enabled Cedric to pursue his passion for plants , especially bearded Irises. He developed over 90 named varieties some of which bear his name such as Benton Menace named after his cat and Benton Rubeo, after his pet macaw. He was also interested in

During WW2, following the Government's edict to 'Grow your own food', the garden grew vegetables. After the war, with others, he founded the Colchester School of Art. Later he became friends with Beth Chatto who was inspired by some of his ideas. Cedric died in 1982 and is buried in Hadleigh cemetery



Benton End

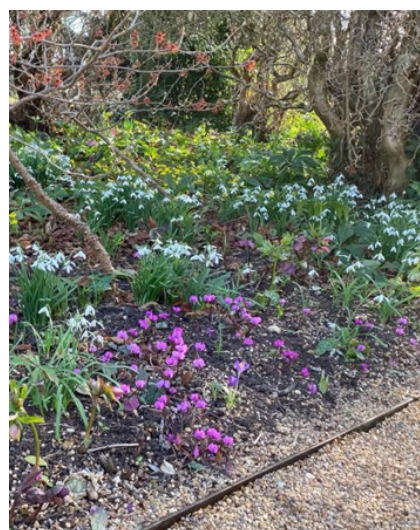


Sara Cook with her collection of Cedric irises

## A Visit to Anglesey Abbey Gardens

Anglesey Abbey is well known for its winter and early spring gardens. We visited on 17th February, a mild, sunny day when the garden was looking and smelling beautiful. The silver birch walk shone in the sunlight and the borders were full of spring flowers. The photos capture just a few of the border plants: aconites, snowdrops, hellebores, cyclamen, crocuses and a few early daffodils. The woodland walks were covered in wide areas of snowdrops and aconites. The shrubs eg skimmia, witch hazel, daphne, dogwoods and more, were full of blossom and the scent was wonderful. Well worth a visit at any season.

Jane Pope

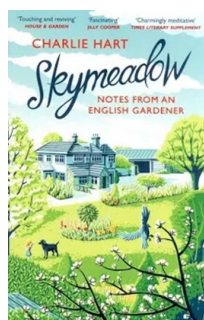


**Book Review:**      **Skymeadow. Notes from an English Gardener**

**Author:** Charlie Hart

**Published by** Constable      **2018**

Charlie Hart's somewhat eccentric and much loved parents were farmers in Suffolk. This book is the story of how Charlie followed his instinct to create a garden to help him through mourning their deaths. He moved from London with his wife and four children to Peverels, a small farmhouse with 7 acres in the Peb valley, near Colne Engaine on the Essex/Suffolk border. He planned and built the garden on the piece of land he called Skymeadow. The book weaves together his own memoir with the story of the developing garden. He found solace in the healing powers of digging and growing. He adapted his plans to include rose, vegetable and herb gardens, an arboretum and the all important football pitch for his son. It is a gentle book and a celebration of gardening and nature.



Jane Pope

Suffolk Orchid Society Show 11.3.23



Alpine Garden Society Show, Pershore, 23rd February 2023



Many thanks to Mike Warren for all the pictures

# Weather damage in the garden

## The effects on our gardens of current changeable weather patterns

**Drought:** In [dry spells](#), roots cannot gather sufficient water to sustain the foliage. Leaves start to wilt first, followed by leaf and bud loss, and ultimately die-back of shoots or whole plants. Parts of the plants furthest from the roots are usually affected first and most severely. Newly planted climbers, shrubs and especially trees are at extra risk because their root system takes several years to develop to the point where they are drought-proof. Do remember that root diseases cause similar symptoms.

**Sun and high temperatures:** As well as water loss, excessive sunshine and heat can lead to scorched areas of leaves, typically on the sunny side of plants and not on the lower leaves, those within plants or on the shaded side. Woodland plants such as [Acer palmatum](#) are especially vulnerable to sun damage but many plants can suffer high temperature damage after a heat wave including camellia and *Lonicera*. Typically brown patches appear on leaves and, in the case of apples, fruit on the most exposed side of the tree develops a reddish-brown burnt patch which often has a flattened appearance. Where leaf scorching is seen after watering in bright sunlight the cause may be due to the water droplets focusing sunlight on the leaves causing burnt areas. Smooth leaves are unlikely to be affected as research suggests that the light from droplets on the leaf surface is not focused on the plant tissue, and water tends to run off smooth surfaces. Hairy leaves may be damaged as the water droplet is suspended over the leaf and the light from these suspended droplets is considered more likely to be focused on the leaf tissues causing damage.

**Flooding:** Soil filled with water contains too little air for plant roots to thrive. In winter when plant roots are dormant they can survive quite long periods of [flooding](#), but in summer when the water demand of roots is high, even short periods of a few days can be fatal.

**Heavy rain:** Tends to affect the top of plants with rain damage breaking delicate shoots and flowers. However it is soil saturation and flooding that causes most harm.

**Frost:** Also tends to affect the top of plants where the freezing is most intense. Lower leaves and areas inside the leaf canopy are less affected. [Frost](#) can damage plants randomly in an affected area with some plants losing buds, foliage, flowers and fruits and others being unaffected.

**Snow:** As well as freezing damage, mechanical damage is caused by the weight of snow breaking branches.

**Hail:** Causes bruising and abrasion and occasionally defoliation or loss of fruits. Hail causes tiny scars on young leaves and fruits that become very noticeable as the plants develop. Hail damage mainly affects the top of plants.

**High winds:** Cause damage to the upper and windward sides of plants. In severe cases plants can be uprooted. [Windy weather](#) also dries out leaves leading to browning, scorching and loss of buds,

## Remedies

You can prevent some weather damage by thinking about plant selection for your garden. Choose hardy plants for frost pockets, or use frost protection. If your garden is prone to flooding, consider [installing drainage](#). But in many cases, there is not much you can do by the way of prevention.

Ensuring plants are healthy and not stressed will go some way in minimising weather damage. Follow our advice in [trees and shrubs: planting](#) to make sure plants get the best start in life. Watering, [feeding](#) and [mulching](#) will all keep plants healthy, as will paying attention to soil health.

If damage does occur, in most cases the plant will grow out of it, although in extreme situations you may want to prune out the damage. Pay particular attention to watering and feeding after a damaging weather event.

Thanks to the RHS for this information

## Battisford & District Gardening Club

www.battisfordgardeningclub.org.uk

Meetings are held at Battisford Village Hall, Straight Road, Battisford, IP14 2HF

### April 3<sup>rd</sup> 2023 – start 7.30pm

“Charlie & The Dig” – Charlie Haylock

Join Charlie for an evening of accent and dialect as he shares his unique insight into dialect coaching on the set of popular Netflix British Drama, ‘The Dig’, for lead actor Ralph Fiennes and Monica Dolan. Charlie is a spoken English historian and author of “In a Manner of Speaking”, and a best-selling Suffolk author including “Sloightly on th’ Huh”. He has had a regular monthly spot on BBC Radio Suffolk for 10 years. Charlie’s reputation as an excellent speaker regularly ensures his talks are sold-out. Therefore we need to ensure the hall is full to capacity and I would urge all members to attend and spread the word but better still bring a guest along with them. Guest fees are only £3.00 (tickets for Charlie’s talks are usually £10 or above!).

The following plants will be available for collection this evening:

1. Lily Beetle resistant Lily
2. Dianthus Baby Dorris
3. Dianthus Pink Marshmallow
4. Brand new English bred Petunias

### May 15<sup>th</sup> 2023 – TBC meet 6.30pm

Visit to Fullers Mill, West Stow, Bury St Edmunds, IP28 6HD

An enchanting and tranquil seven-acre creation on the banks of the River Lark. It combines a beautiful site of light dappled woodland with a plantsman’s collection of unusual shrubs, perennials, lilies and marginal plants. It is a garden of all-year-round interest. The garden was created by the late Bernard Tickner MBE (1924-2017). He moved to Fullers Mill in 1958 and spent over 50 years creating the garden you see today from rough scrub and woodland.

### June 3<sup>rd</sup> 2023

Car Boot Sale, Needham Lake, Needham Market

As a way of raising funds, we will be hosting a plant table at the car boot sale. It is hoped members will support the initiative by raising additional plants. Plants will need to be delivered to Paul Hansord at The Blenheims by Friday 2<sup>nd</sup> June. We will need a van from Friday afternoon to Saturday afternoon. Does anyone have access to be able to borrow a van for 24hrs?

### June 13<sup>th</sup> 2023 – tour starts 6.30pm (max 16 members)

Visit to John Innes Centre, Norwich Research Park, Norwich, NR4 7UH

**Please note this is the second Tuesday in the month. Please register if you would like to attend. A form is available on the administration table.**

An independent, international centre of excellence in plant science, genetics and microbiology, fostering a creative, curiosity-driven approach to fundamental questions in bio-science, with a view to translating that into societal benefits. Over the last 110 years they have achieved a range of fundamental breakthroughs, resulting in major societal impacts.

### July 3<sup>rd</sup> 2023 – TBC

Visit to Pulham Cottage, Wetherden, Stowmarket, IP14 3LQ

A relaxed cottage garden set in 1 ½ acres, created over the last 5 years. It is divided into rooms using mixed hedging, hazel fencing and vintage iron gates and fencing. There is a clipped box parterre, a kitchen garden with flowers for cutting, an orchard, and wildflower areas to explore. Areas are left for re-wilding to encourage moths, butterflies and bees. Lots of seating to relax and enjoy the vistas and views.

**August 2<sup>nd</sup> 2023 – free entry for Club members as we are now an Affiliate of the RHS**

Visit to RHS Hyde Hall Flower Show, Creephedge Lane, Chelmsford, Rettendon, CM8 8RA

Exhibitors will showcase quality plants, advice, demonstrations and more with specialist nurseries, gardening sundries, expert advice and demonstrations, as well as the chance to explore the garden in full bloom. You can also visit the gardens nestled in the heart of rural Essex and enjoy the peace and tranquillity, with its eclectic mix of traditional and modern styles. Highlights include the Dry Garden with its fantastic range of drought resistant plants and the Hilltop Garden with its roses and herbaceous borders.

**September 8<sup>th</sup> 2023 – 7.30pm (?) at Ringshall Village Hall, Lower Farm Road, Ringshall, IP14 2JB  
£5.00 for BDGC members & £10.00 for guests**

**“The future role of the Royal Horticultural Society” – by the new RHS Director General, Clare Matterson**

Clare took up the role of Director General of the RHS in June 2022 and has been an RHS member since 1994. As a passionate gardener, she was excited to join the RHS as they play their part in the recovery and longer term growth both for people and for nature through the inspiration, the science and the beauty of gardens. Clare was previously Executive Director of Engagement at the Natural History Museum. She was awarded a CBE for services to public engagement, a Fellowship to the British Science Association for outstanding contributions to public engagement and was one of GQ's top 100 influential women.

We are still in the process of finalising the evening's presentation.

**October 2<sup>nd</sup> 2023 – start 7.30pm**

**AGM**

Followed by a talk by Paul Hansord on the flora and fauna of New Zealand, following his 4-week holiday last autumn. Find out why the 4<sup>th</sup> largest tree in the world does not have any knots!

**November 6<sup>th</sup> 2023 – start 7.30pm**

**“Creating a Wildlife Pond” – Karon Saunders**

Karon created a very successful wildlife pond on her 10-acre nursery in Mendlesham. This talk is about how you can create a pond in your garden. Karon and her husband, Simon, set up Stackyard Nursery on land that had been left to Simon by his Mother and Grandmother who used to live in the house next door. Their plan was to focus on the customer who needed some help in deciding what they need to plant or how they should alter their garden to tailor it to their needs.

**December 2<sup>nd</sup> 2023 – start time TBC**

**Christmas Wreath Making Workshop. £15.00 per person.**

You will be provided with all the greenery you need to craft your wreath from scratch – the perfect way to get into the Christmas spirit! This includes using moss and foliage to build up the frame of your wreath, and bring your own decorations to personalise your own wreath to suit your own style. Mulled wine and mince pies served. To book, contact Caroline via email on [caroline@wicking.me](mailto:caroline@wicking.me) Book early – limited availability.

**December 4<sup>th</sup> 2023 – start time 7.00pm**

**Annual Christmas Quiz**

George has agreed to host this entertaining evening after a two-year absence. Food and Christmas snacks will be served on the evening. Bring your own wine.

**January 17<sup>th</sup> 2024 – start time TBC**

**Afternoon Tea at Alder Carr Farm, Creeping St Mary, Ipswich, IP6 8LX**

A delicious high tea with a selection of sandwiches and savouries, mini cakes and scones all made by hand in their own bakery. Their newly refurbished Courtyard Café is situated in a beautifully converted traditional oak framed barn, around their farm courtyard.

**February 5<sup>th</sup> 2024 – start time 7.30pm**

**“Getting the best out of your roses” – Ian Limmer**

Ian has worked for Peter Beales Roses for 46 years and lectured in Japan, China and all over the country and even given a lecture and workshop for Prince Charles' gardeners at Highgrove. He has helped to win 26 Gold medals at Chelsea. However, he is very hands on and very willing to weed and water!